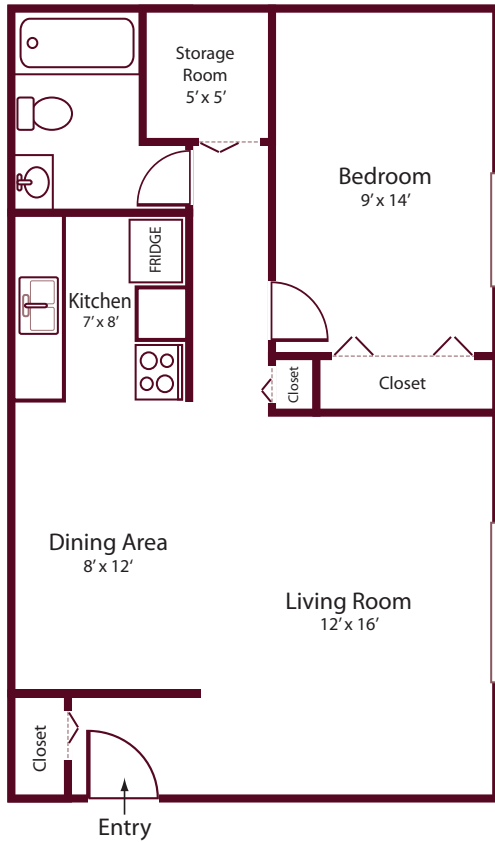
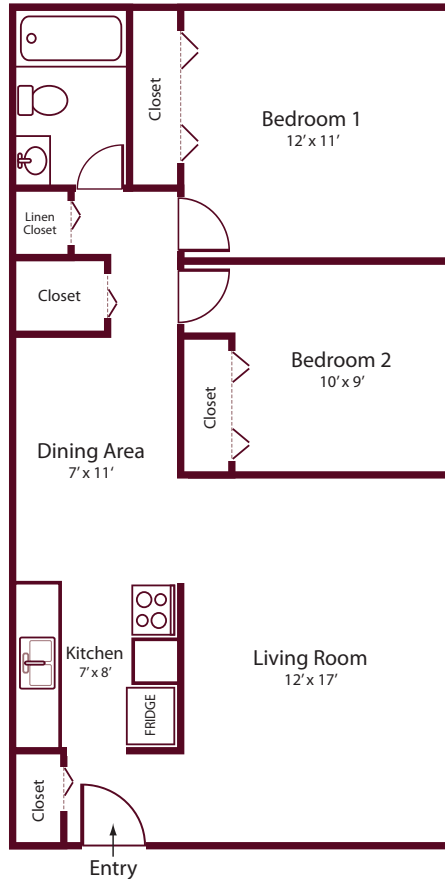




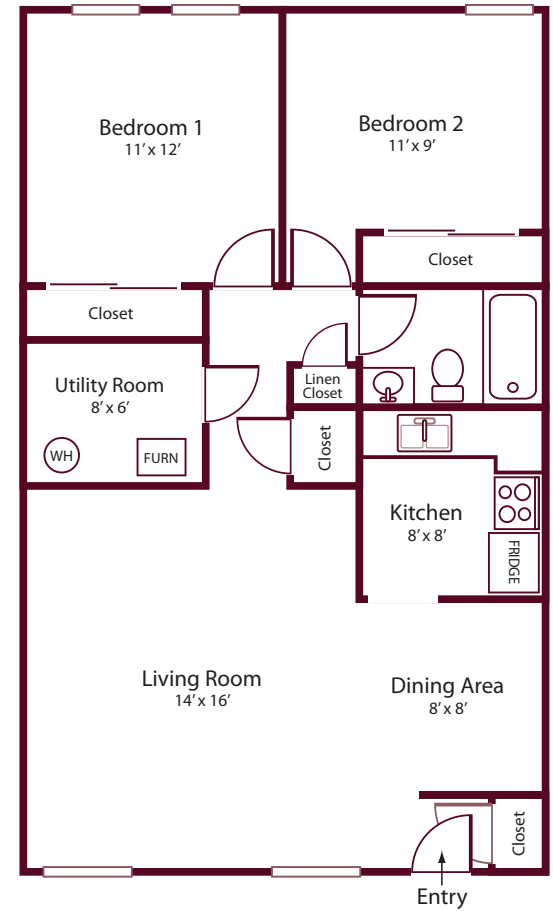
1700 W. Church Street • Orrville, OH 44667
Ph: (330) 682-4436
Fax: (330) 247-4212
Email: HMManager@GranitePMC.com
 www.GranitePMC.com
 Professionally Managed by Granite Property Management Co.



Standard One Bedroom:
 Total Apartment Space
 Approximately 650 Square Feet
 Rent \$ _____



Standard Two Bedroom:
 Total Apartment Space
 Approximately 750 Square Feet
 Rent \$ _____



Large Two Bedroom:
 Total Apartment Space
 Approximately 830 Square Feet
 Rent \$ _____

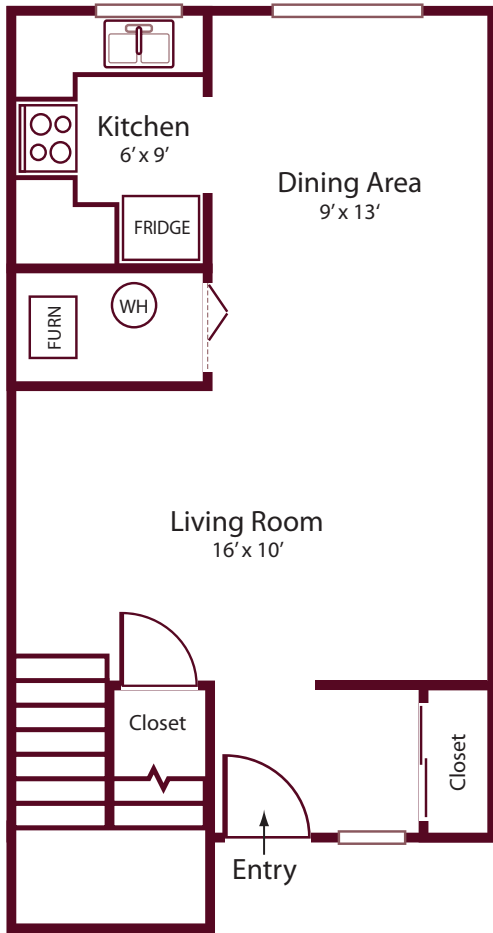


Features:

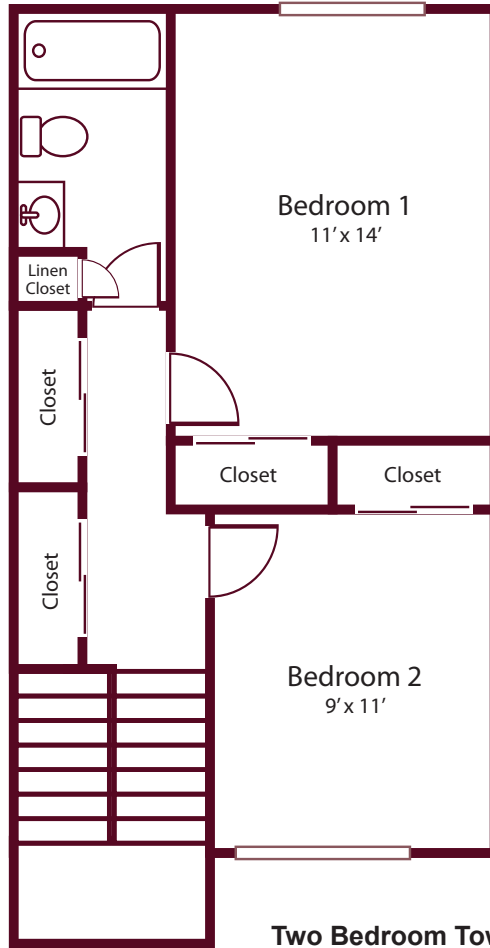
- 1 and 2 Bedroom Floor-plans Available
- 2-Bedroom Town-homes Available
- Water, Sewer, & Trash Removal included.
- Individual Gas Furnaces in some units.
- Hot-Water Baseboard heat in all other units.
- On-site Laundry Facilities
- Quiet Setting - surrounded by Single-Family Homes.
- Hill Top Park and Playground next door.
- On-site, Full-time, Professional Management

Call today for your personal tour and begin living The Lifestyle you Deserve.

1st Floor



2nd Floor



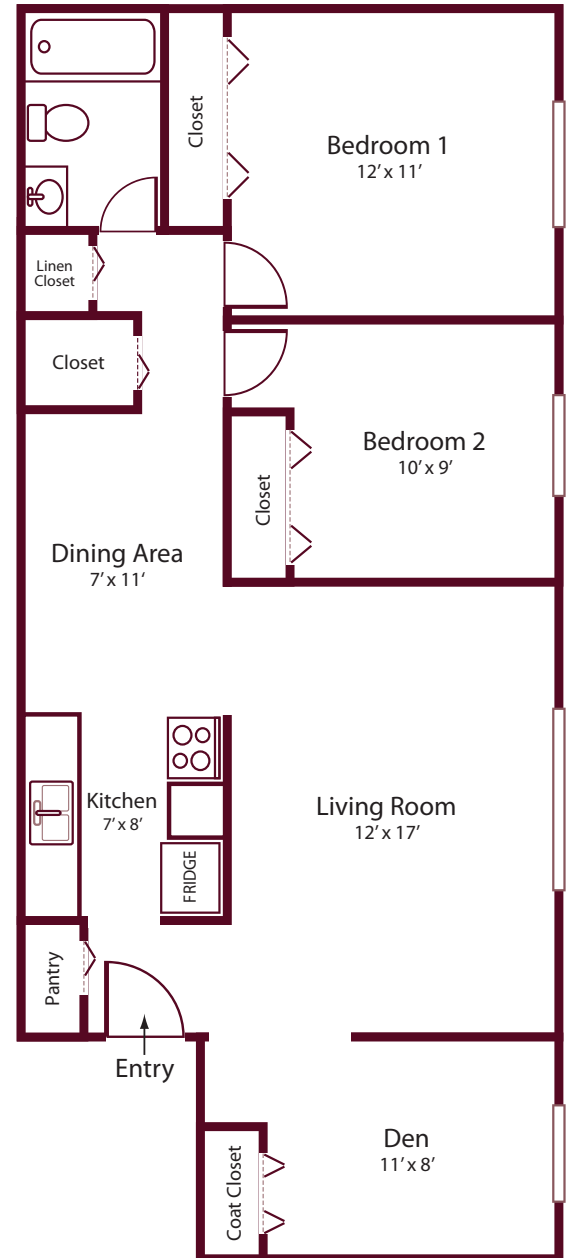
Two Bedroom Town-Home:
Total Apartment Space
Approximately 860 Square Feet

Rent \$ _____

Two Bedroom with Den:

Total Apartment Space
Approximately 850 Square Feet

Rent \$ _____



1700 W. Church Street • Orrville, OH 44667
Ph: (330) 682-4436
Fax: (330) 247-4212
Email: HMManager@GranitePMC.com
 www.GranitePMC.com
 Professionally Managed by Granite Property Management Co.

